

## QS 系列称重传感器 Double Ended Beams Load Cells

### QS - B 称重传感器 QS - B Load Cell



### CAP. 25klb---- 125klb

#### 可替换

Interchangeable products

|           |         |
|-----------|---------|
| Celtron   | DLB     |
| Rice Lake | R175040 |
| STS       | 65040   |
| CAS       | DSB2    |

#### 应用场合

Applications

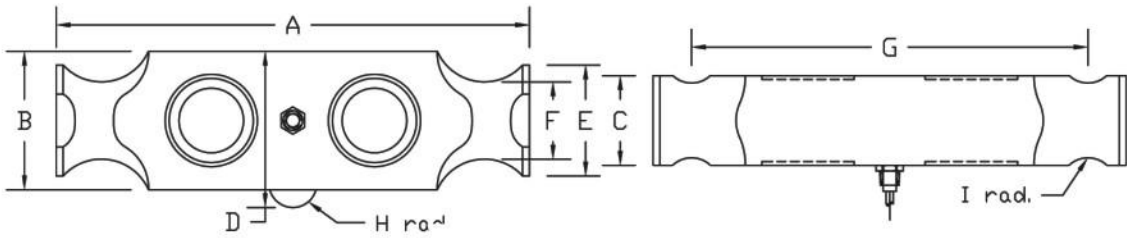
汽车衡、轨道衡、罐装秤、容器秤等  
Truck scales  
Railroad track scales  
Precision tank  
Bin and silo weighing  
Level and inventory monitoring ect.

#### 外形尺寸 size

#### 可选项

Optional

| 使用环境 Environment<br>材料 (Material) | 常规 (Conventional) | 高温 (High-temp.) | 防爆 (Anti-explosion) | 数字式 Digital |
|-----------------------------------|-------------------|-----------------|---------------------|-------------|
| 合金钢 (AS)                          | QS-B              | QS-B-H          | QS-B-E              | QS-B-D      |
| 不锈钢 (SS)                          | QS-B-SS           | QS-B-H-SS       | QS-B-E-SS           | QS-B-D-SS   |



|           | A     | B    | C    | D    | E    | F    | G     | H    | I    |
|-----------|-------|------|------|------|------|------|-------|------|------|
| 25K-60KSE | 8.25  | 2.44 | 1.94 | 2.97 | 2.00 | 1.63 | 7.25  | 0.50 | 0.50 |
| 50K-75K   | 11.50 | 2.94 | 1.94 | 3.47 | 2.20 | 1.70 | 10.00 | 1.00 | 0.75 |
| 100K-125K | 14.50 | 3.86 | 2.90 | 4.68 | 3.20 | 2.44 | 12.50 | 1.50 | 1.00 |

#### 技术参数

Technical data

|  |                    |  |                   |
|--|--------------------|--|-------------------|
| 灵敏度 Sensitivity                          | 3.0000±0.0020 mV/V | 输出电阻 Output Resistance                   | 700±4Ω            |
| 零点平衡 Zero Blance                         | <±1.0%F.S          | 绝缘电阻 Insulation Resistance               | >5000MΩ/100V      |
| 综合误差 Total Error                         | <±0.020%F.S        | 参考电压 Referencce Excitation Voltage       | 10V               |
| 蠕变(30分钟) Creep(30 Minutes)               | <±0.030%F.S        | 额定电压 Nominal Range Of Excitation Voltage | 5V~18V (AC or Dc) |
| 非线性误差 Non-Linecrtiy                      | <±0.015%F.S        | 工作温度范围 Operating Temperature Range       | (-30~+80)℃        |
| 滞后误差 Hysteresis Error                    | <±0.015%F.S        | 温度补偿范围 Compensated Temperature Range     | (-10~60)℃         |
| 零点温度影响 Temperature Effect On Zero        | <±0.018%F.S/10K    | 安全过载 Safe Load Limit                     | 150%F.S           |
| 输出温度补偿 Temperature Effect On Sensitivity | <±0.025%F.S/10K    | 极限过载 Ultimate Load                       | 300%F.S           |
| 输入电阻 Input Resistance                    | 700±10Ω            | 防护等级 Protection According                | Ip67              |

● 非线性、蠕变、滞后误差和温度对灵敏度输出的影响等参数为典型的参数，以上参数最终符合国际法制计量组织OIML R60国际建议误差带要求。